

Ludger

Certificate of Analysis

LudgerPure™ 2AB Labeled NA2F Glycan

Cat. #: CAB-NA2F-01

Lot #: A85U-04

Size : approx. 100 pmol

Purity: > 90% 2AB labeled NA2F glycan, as assessed by HPLC - see Fig 1.

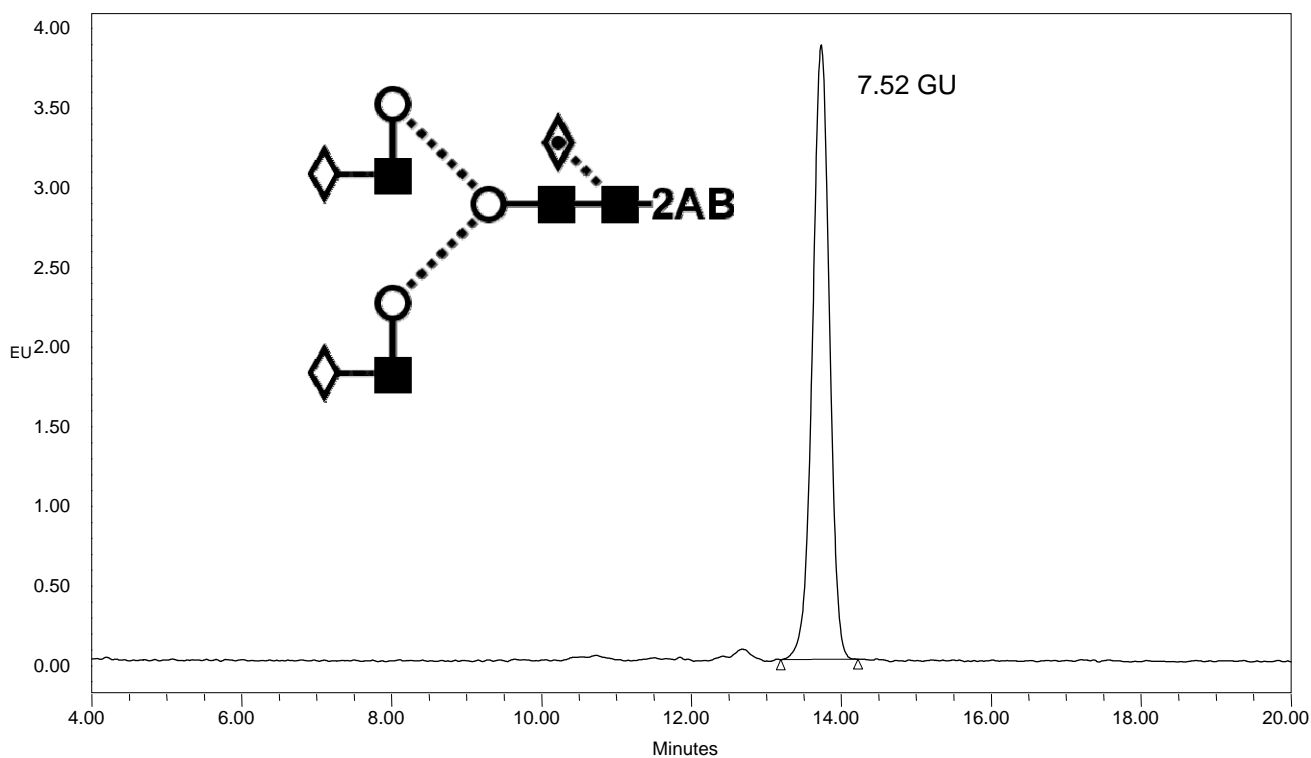
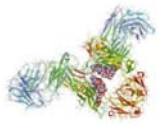


Figure 1 : LudgerSep-N2 HPLC profile of 2-AB labeled NA2F glycan (Cat. #: CAB-NA2F-01, Lot No. A85U-04).

**NA2F glycan structure identified by MALDI MS & HPLC (GU value comparison to GlycoBase). This structure is drawn according to the scheme developed by Oxford-Dublin Glycobiology Laboratory (see Fig 2).*

2-AB NA2F peak seen above, eluted at 13.7 minutes, under the following conditions:

HPLC Running Conditions:



Ludger

Column: LudgerSep N2 Amide (Cat. #: LS-N2-4.6x150)

Flow: 1.0 ml/min *unless stated.*

Temperature: 35 °C

Solvent A: 100 % acetonitrile Solvent B: 50 mM ammonium formate pH 4.4

Gradient:

- 0 - 22 min – 35 % B
- 22 - 22.5 min – 35-46 % B
- 22.5 - 24.5 min – 46-100 % B
- 24.5 - 26 min – 100% B
- 26 - 30 min – 100-35 % B
- 30 - 45 min – 35 % B

Detector: Waters 2475 Excitation wavelength: 330 nm

Emission wavelength: 420 nm

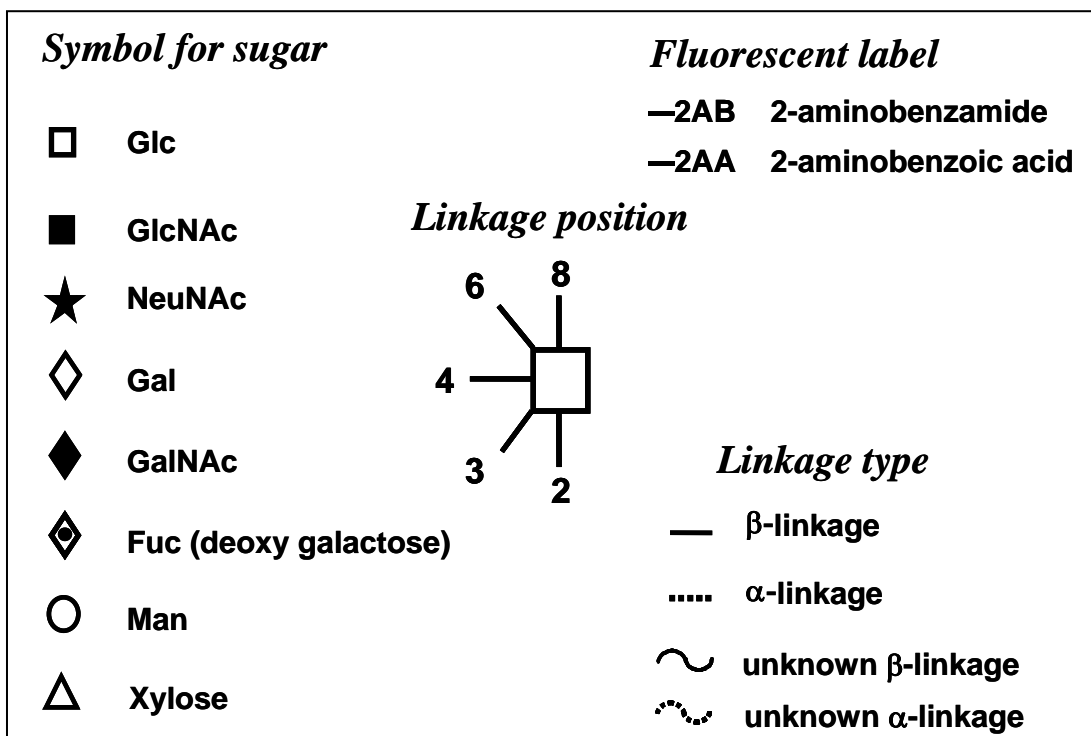


Figure 2 : GlycoBase glycan structure key (<http://glycobase.ucd.ie/cgi-bin/public/glycobase.cgi>).