

Ludger

Certificate of Analysis

LudgerPure™ 2AB Labeled MAN-5 Glycan

Cat. # : CAB-MAN5-01

Lot # : A84M-01

Size : approx. 100 pmol

Purity: > 90% 2AB labeled MAN-5 glycan, as assessed by HPLC - see Fig 1.

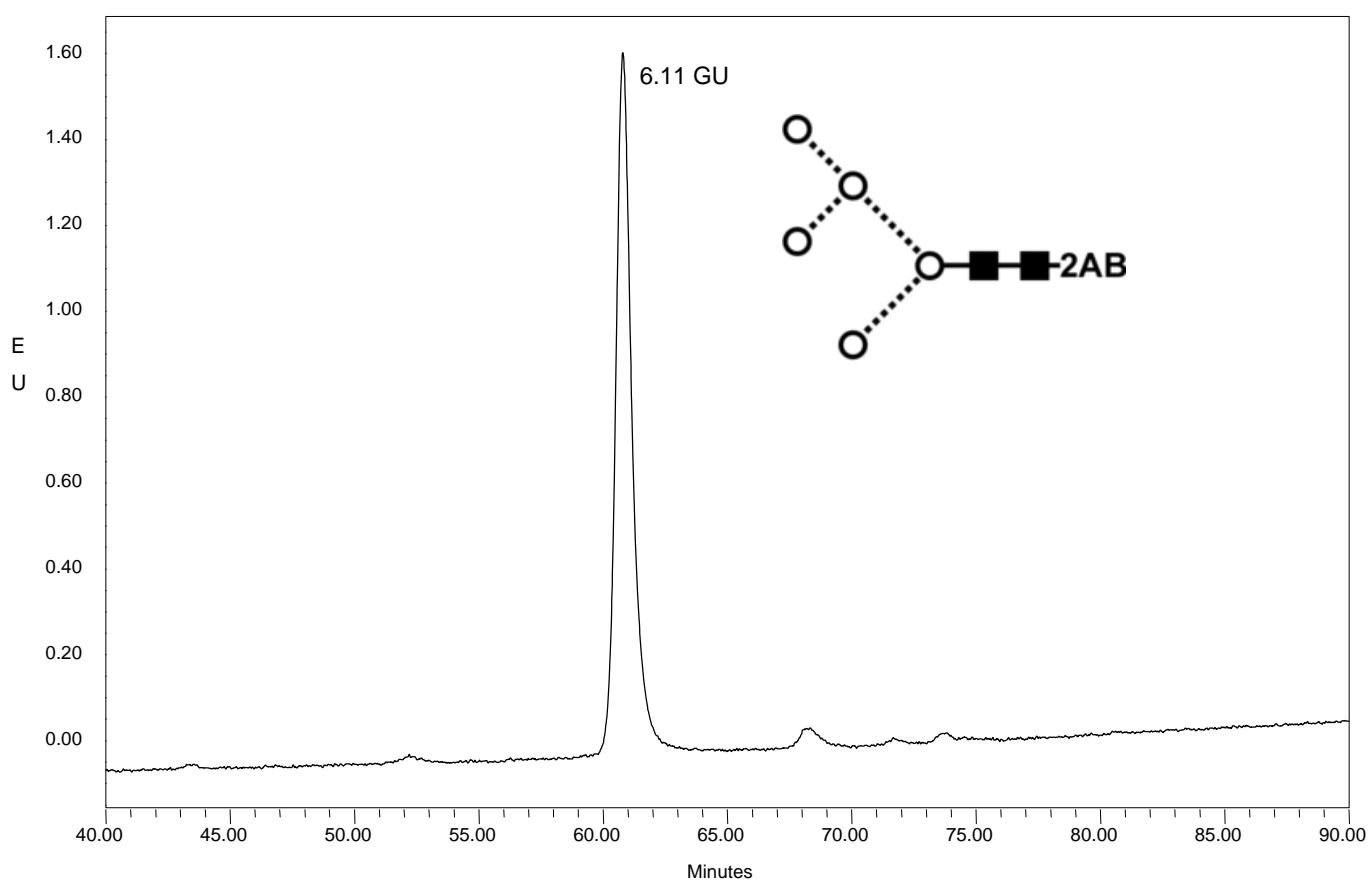


Figure 1 : LudgerSepN1 HPLC profile of 2AB labeled MAN-5 glycan (Cat. #: CAB-MAN5-01, Lot No. A84M-01).

**MAN-5 glycan structure identified by MALDI MS & HPLC (GU value comparison to GlycoBase). This structure is drawn according to the scheme developed by Oxford-Dublin Glycobiology Laboratory (see Fig 2).*

2-AB MAN-5 peak seen above, eluted at 60.8 minutes, under the following conditions:



Ludger

HPLC Running Conditions:

Column: LudgerSep N1 Amide (Cat. #: LS-N1-4.6x250)

Flow: 0.4 ml/min *unless stated.*

Temperature: 35 °C

Solvent A: 100 % acetonitrile Solvent B: 50 mM ammonium formate pH 4.4

Gradient:

- 0 - 104 min – 26 % B
- 104 - 105 min – 26-52 % B
- 105 - 106 min – 52-100 % B, *flow rate ramped to 1 ml/min.*
- 106 - 111 min – 100% B (flow 1 ml/min)
- 111 - 112 min – 100-26 % B (flow 1 ml/min)
- 112 – 117 min – 26 % B (flow 1 ml/min)
- 117 - 118 min – 26 % B, *flow ramped back to 0.4ml/min.*

Detector: Waters 2475 Excitation wavelength: 330 nm

Emission wavelength: 420 nm

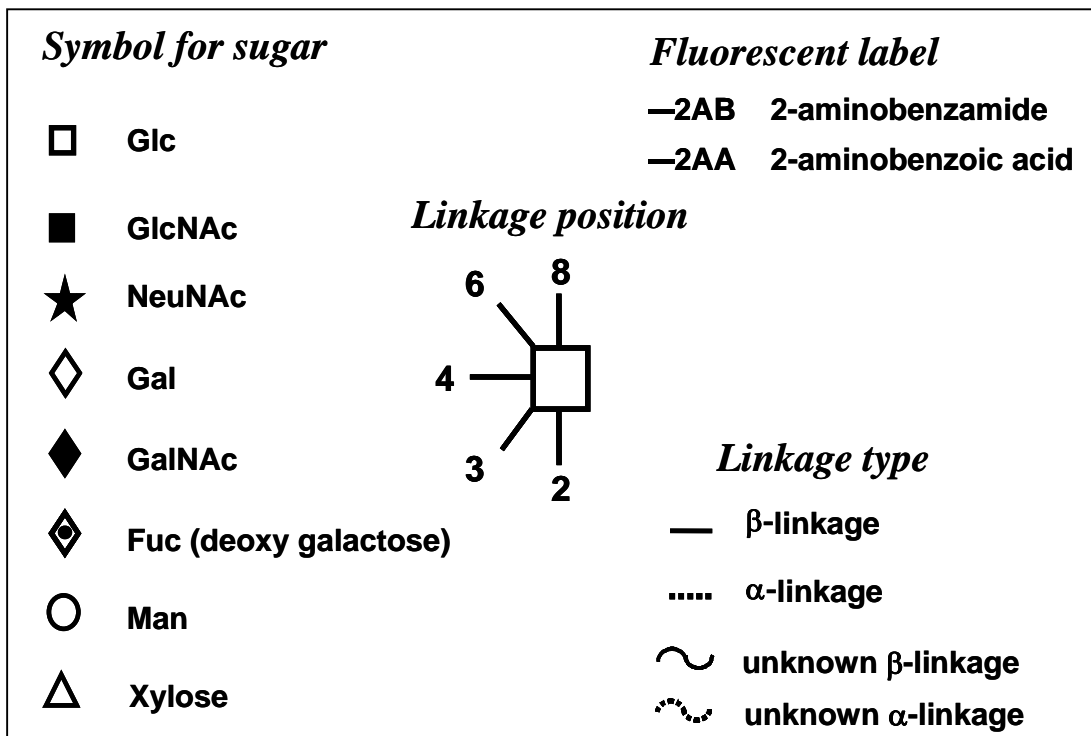


Figure 2 : GlycoBase glycan structure key (<http://glycobase.ucd.ie/cgi-bin/public/glycobase.cgi>).