

Ludger

## Certificate of Analysis

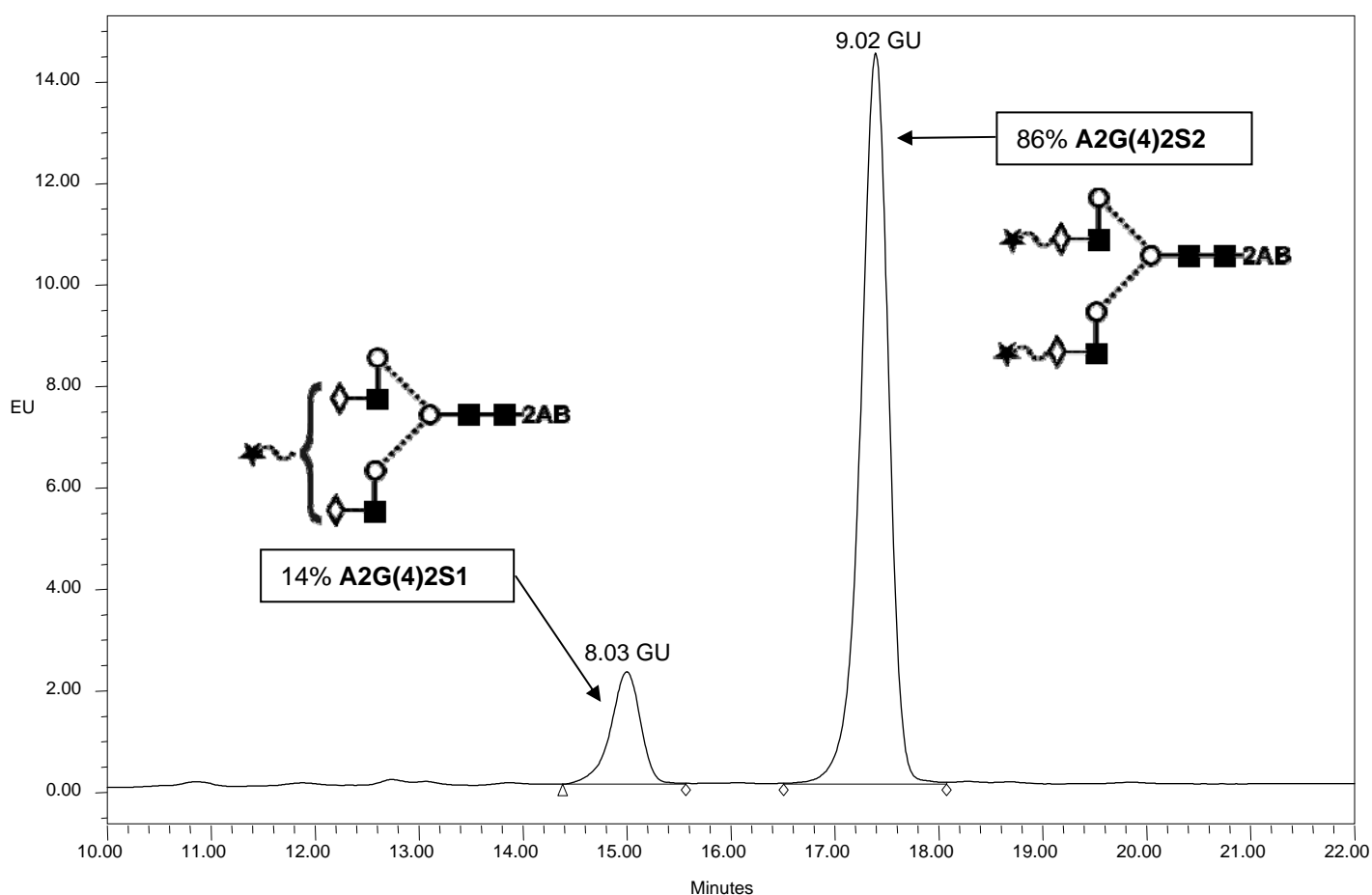
### LudgerPure™ 2AB Labeled A2 Glycan

Cat. #: CAB-A2-01

Lot #: A849-03

Size: approx. 100 pmol

**Purity:** > 85% 2AB labeled A2 glycan, as assessed by HPLC - see Fig 1.

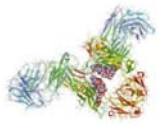


**Figure 1** : LudgerSepN1 HPLC profile of 2AB labeled A2 glycan

(Cat. #: CAB-A2-01, Lot No. A849-03).

*\*A2 glycan glycan structure identified by MALDI MS & HPLC (GU value comparison to GlycoBase). This structure is drawn according to the scheme developed by Oxford-Dublin Glycobiology Laboratory (see Fig 2).*

**2-AB A2 peak seen above, eluted at 17.4 minutes, under the following conditions:**



Ludger

**HPLC Running Conditions:**

Column: LudgerSep N2 Amide (Cat. #: LS-N2-4.6x150)

Flow: 1.0 ml/min

Temperature: 35 °C

Solvent A: 100 % acetonitrile    Solvent B: 50 mM ammonium formate pH 4.4

Gradient:

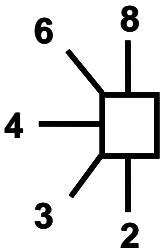
- 0 - 22 min – 35 % B
- 22 - 22.5 min – 35-46 % B
- 22.5 - 24.5 min – 46-100 % B
- 24.5 - 26 min – 100% B
- 26 - 30 min – 100-35 % B
- 30 - 45 min – 35 % B

Detector: Waters 2475    Excitation wavelength: 330 nm

Emission wavelength: 420 nm

<i>Symbol for sugar</i>		<i>Fluorescent label</i>
□	Glc	—2AB 2-aminobenzamide
■	GlcNAc	—2AA 2-aminobenzoic acid
★	NeuNAc	
◇	Gal	
◆	GalNAc	
◊	Fuc (deoxy galactose)	
○	Man	
△	Xylose	

<i>Linkage position</i>	
	

<i>Linkage type</i>	
—	β-linkage
.....	α-linkage
~	unknown β-linkage
~	unknown α-linkage

**Figure 2 :** GlycoBase glycan structure key (<http://glycobase.ucd.ie/cgi-bin/public/glycobase.cgi>).